

# UR-W094C

# UNIC MINI-CRAWLER CRANE

**UR-W094C is the smallest mini-crawler crane in the range.**

Measuring 595mm wide and weighing 1000kg, it is ideal for maneuvering into confined working area and capable to pass through standard size doorway. Its outriggers allow for independent multi-angle configurations to sit at the best position in restricted or confined area.

**Max 5.17m**  
Working radius

**Max 995kg × 1.5m**  
Lifting capacity

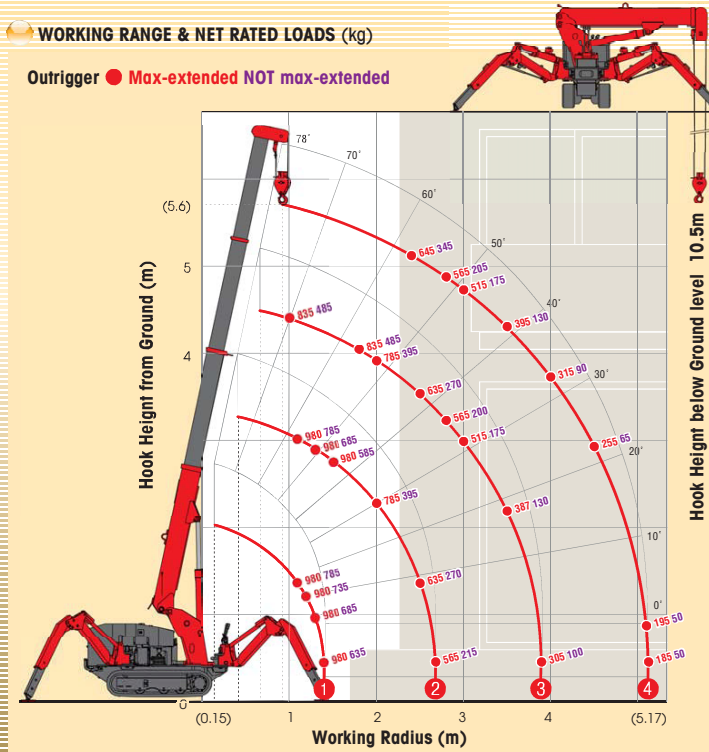
**Max 5.6m**  
Hook height (Approx.)  
(Above ground level)

**1000kg**  
Mass of crane



## WORKING RANGE & NET RATED LOADS (kg)

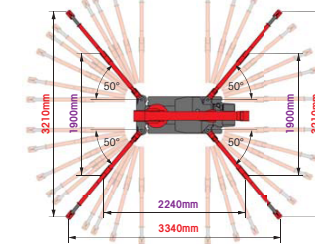
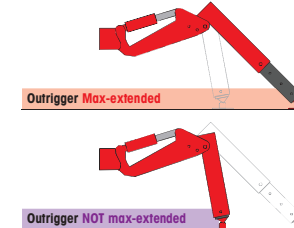
Outrigger ● Max-extended NOT max-extended



## SPECIFICATIONS

Crane model	UR-W094C
Lifting capacity	Max. 995kg of 1.5m
Working radius	Min. 0.15m, Max. 5.17m
Hook height (Approx.)	Above ground level
	Below ground level
Boom	Length
	Structure
Winch	Single line speed
	Hook speed
Slewing	Range
	Speed
Outriggers	Type
	Structure
Hydraulic pump	Rated pressure
	Rated delivery
Hydraulic oil tank capacity	Rated revolution
	Structure
Safety devices	Pressure relief valve for hydraulic circuit / Counterbalance valves for boom raising and boom telescoping cylinders / Double pilot-operated check valves for outrigger cylinders Boom angle indicator with load indicator / Hook safety latch / Automatic stop for overwinding / Overwinding alarm / Automatic stop for leaving minimum wire rope Emergency stop button (ignition cut) / Inter-lock device of crane and crawling levers / Inter-lock device of crane and outriggers / Level

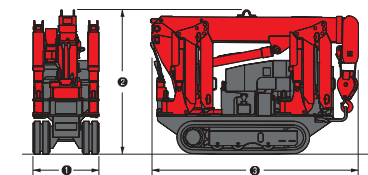
## OUTRIGGER POSITIONS



## CRAWLING GEAR

Crane model	UR-W094C
Crawling speed	0-2.2 km/h, forward / reverse
Hill climbing ability	2°
Tread length	900mm
Ground contact pressure	36.3 kPa (0.37 kgf/cm <sup>2</sup> )
Engine manufacturer / model	Mitsubishi / GM3011E
Displacement	296cc
Maximum output	5.5kW(7.5PS) / 1800 rpm, Rated output
Fuel	Petrol
Fuel tank capacity	6 liters
Steering	Hydraulic drive independent of left / right
Starter	Starter motor (Recall starter)

## DIMENSIONS



Crane model	UR-W094C
Total width	595mm
Total height	1290mm
Total Length	1870mm
Mass of crane	1000kg